


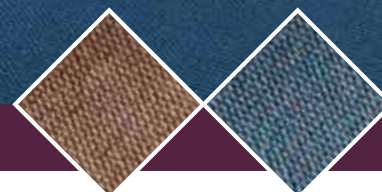


 **MADE IN THE UK. MADE TO LAST.**

Specification

PRODUCT		Hobnail Heavy Contract Carpet and Tiles
FIBRE CONSTRUCTION		80% Polypropylene, 15% Polyamide, 5% Recycled Polyester
WEIGHT		1020gsm (Sheet), 4020gsm (Tile)
THICKNESS		7.20mm (Sheet), 8.0mm (Tile)
ROLL WIDTH		2 metre
TILE SIZE		50cm x 50cm (Tiles are Bitumen backed)
TILES PER BOX		20 (5m ²)
COLOUR FASTNESS		Light (BS EN ISO 105:B02) >6 Wet Rubbing (BS EN ISO 105:X12) 5 Dry Rubbing (BS EN ISO 105:X12) 5
FLAMMABILITY		(BS5287) Assessment and labelling of Textile Floorcoverings tested to BS4790 (Hot Metal Nut Test) - Low Radius of Char
BS EN 13501		Class Cfl-s1 (Sheet) Class Bfl-s1 (Tile)
REDUCTION IN IMPACT NOISE		BS EN ISO 10140-3:2010: 25dB (Sheet) and 24dB (Tile)
ANTISTATIC		Suitable for use in computer rooms
INSTALLATION		Hobnail tiles should be laid tessellated as per the icon provided. The method of installation should conform to BS5325. For details of subfloor preparation and a full guide to installation visit: www.heckmondwike-fb.co.uk . Before laying Hobnail, tiles should be allowed to condition for 24 hours at the expected temperature and humidity levels.
ADHESIVE GUIDE		Sheet carpet can be fully adhered with F.Ball's F3 or F52, or Bostik Laybond Adhesive. Sheet carpet can also be laid into F. Ball's F40 as a release system. For tiles and planks, use F.Ball's F41 or Bostik Laybond Carpet Tile Tackifier.
MAINTENANCE		To achieve maximum life expectancy it is essential to initiate a maintenance schedule from the date of installation. A full guide to cleaning & maintenance is available at: www.heckmondwike-fb.co.uk

PLEASE NOTE: For technical reasons, as with all textile materials, it is not possible to colour match from different batches. Orders that need to colour match should be placed at the same time. Production may, therefore, show variations to the sample card. Heckmondwike reserves the right to change or modify product specifications without giving prior notice.



 EN 14041 Heckmondwike FB Liversedge WF15 7FH 13 Hobnail Sheet Fibre Bonded Sheet Floorcovering intended for internal use  	 EN 14041 Heckmondwike FB Liversedge WF15 7FH 09 Hobnail Tile Fibre Bonded Tile Floorcovering intended for internal use  
--	--

